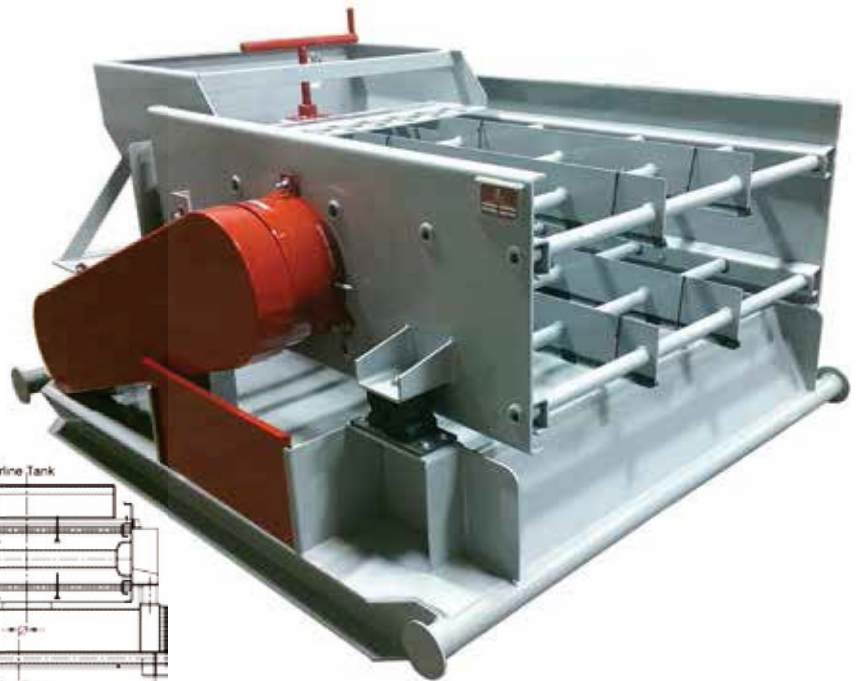
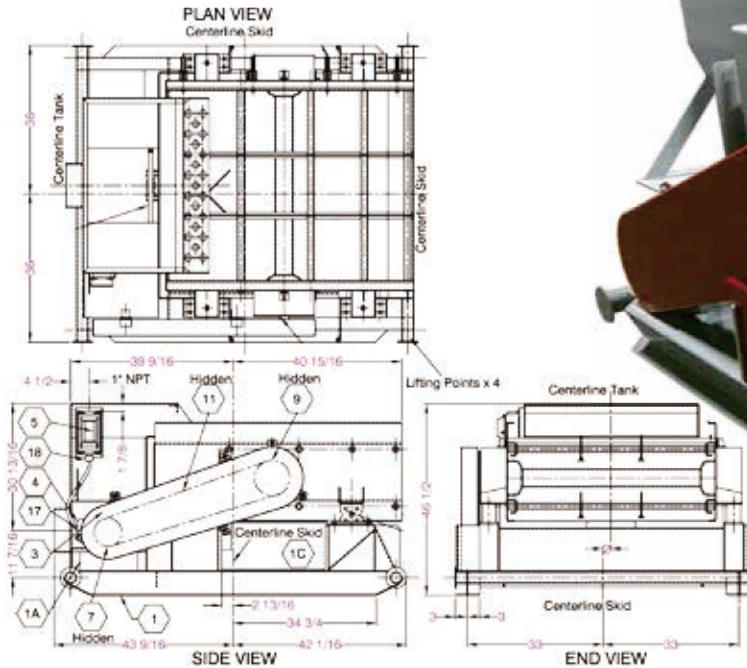




# 4X5 SINGLE TANDEM SHAKER



**DLC 4X5 SINGLE TANDEM** Shale Shaker has been designed to provide extended service life in all drilling related applications for which it was designed. Each unit is constructed of A-36 and/or 316ss plate built to proven oilfield specifications. The vibrating assembly can be powered by an electric motor or a hydraulic motor.

## DESIGN FEATURES

The DLC 4X5 SINGLE TANDEM series of Shale Shakers use a belt driven shaft with counter-weights that is located above the center of gravity. Depending on the flow, solids content, and plastic viscosity of the fluid, the standard series can use as fine as a 100 mesh screen and still give desired solids removal.

A field proven, simple, low maintenance screen design and screen tensioning system were selected for this unit.

## SCREEN SELECTION

For most top-hole drilling, a 20/40 (top/bottom) combination has proven satisfactory. As the hydraulics program allows, a 40/60 or a 40/80 combination is recommended. For removal of small cuttings such as those generated by diamond bits, we recommend using screen 100 or finer. Your drilling practices may indicate screen selections differing from these recommendations. If you have any questions, call DLC technical support. For finer separation that listed above can be achieved with DLC Desanders, Desilters, Mud Cleaners for effective solids control.

200 N. Rockwell Oklahoma City, OK 73127 (P) 405.789.7867 (Toll Free) 877.888.PUMP (F) 405.792.2202