



VORTEX FLUID SYSTEMS INC.

ORBITAL® 3000 TRIPLE

DESCRIPTION

The ORBITAL® 3000 Triple has three Orbital 3000 baskets mounted on the same base. The Orbital 3000 Triples's high performance and low maintenance design combined with longevity features such as seal welding and multiple layers of powder coat, is why the Orbital 3000 Triple is considered by many of our customers as one of the best investments on their drilling rig. Couple this with a patent pending screen seal that is as easy to change as a set of screens and it is no wonder the Orbital has gained an unparalleled reputation with both rig owners and tool pushers as the best shaker in the oilfield.

PERFORMANCE

The screen area of the Orbital 3000 Triple is 90 ft² with 6 g's of acceleration (7.5 g's optional). The combination of screen surface area, high g's, and screen motion make the Orbital 3000 one of the best performing machines in the industry. The Orbital 3000 Triple shaker use progressive elliptical motion for extended screen life and excellent conveyance.

FEATURES

ORBITAL® shakers have many beneficial features.

- ☑ **VIBRATION ACCELERATION:** 6 g's (7.5 g's optional)
- ☑ **SCREEN AREA:** 90 ft² of screening area
- ☑ **MOTION:** elliptical motion
- ☑ **SCREEN LIFE:** ORBITAL® shakers have exceptional screen life
- ☑ **SEAL WELDED:** fully seal welded baskets.
- ☑ **LOW MAINTENANCE:** ultra low maintenance design
- ☑ **LOW NOISE:** 70 db standing 3ft from discharge
- ☑ **ABRASION PERFECTION:** two layers of powder coat
- ☑ **SCREEN SEALS:** patent pending screen seals are as easy to change as a set of screens
- ☑ **VIBRATORS:** vibrators are one of the most overbuilt electrically and mechanically in the industry
- ☑ **MANUFACTURING:** Made in USA



DRILLING FLUIDS MANAGEMENT

The VFSI Orbital 3000 Triple shaker is conveniently arranged to simplify drilling fluids/cement bypass management.

NORMAL OPERATION

In normal drilling operation, the door through the floor pan between the Orbital 3000 Triple baskets returns flow to the sand trap.

CEMENTING OPERATION

Cementing is diverted to bypass the Orbital 3000 baskets by installing the floor pan door and the two inner shaker doors. Removing the two cement bypass doors and opening the bypass gate discharges cement to the reserve pit

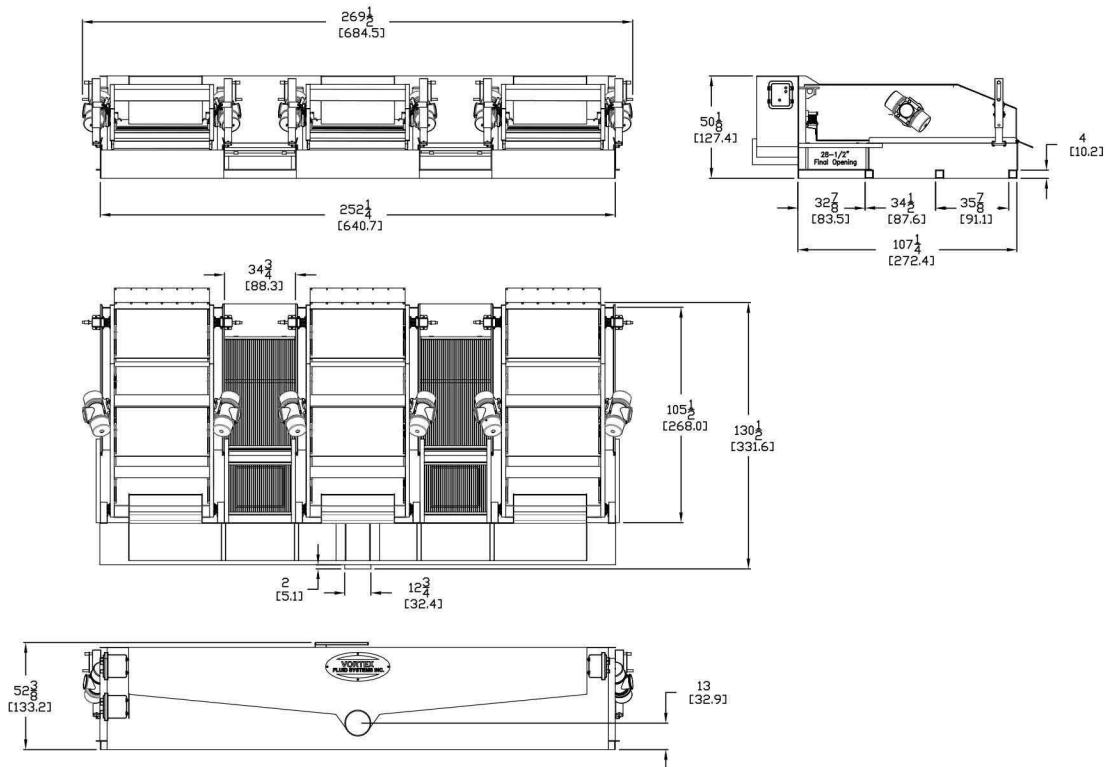




SPECIFICATIONS AND DIMENSIONS

ORBITAL® 3000 TRIPLE

NAME: Orbital 3000 Triple
SCREEN AREA: 90 ft ² [8.4 m ²]
"G" FORCE: 6 g's (standard), 7.5 g's (optional)
MOTION: Progressive Elliptical
DIMENSIONS (LxWxH): 130-1/2x269-1/2x52-3/8in (332x685x133cm)
BASE DIMENSIONS (LxW): 105-7/8x156-5/8in (269x398cm)
WEIGHT: 12250lb [5568kg]
WEIR HEIGHT: 26.5in [67.3cm]
ADJUSTMENT ANGLE: 0 to 8 degrees
ANGLE CHANGE TYPE: hand crank (standard) or center wheel (optional)
SCREEN TYPE: pretension
SCREEN NUMBER: 12 screens
SCREEN SIZE: 48 x 24 in [122 x 61 cm]
MOTORS: Italvebras, 1200 or 1800 rpm, 50 or 60 hz
MOTOR TYPE: explosion proof
ELECTRICAL BOX TYPE: explosion proof



[BACK TO AIPU SHAKER SCREEN FAQ PAGE](#)

